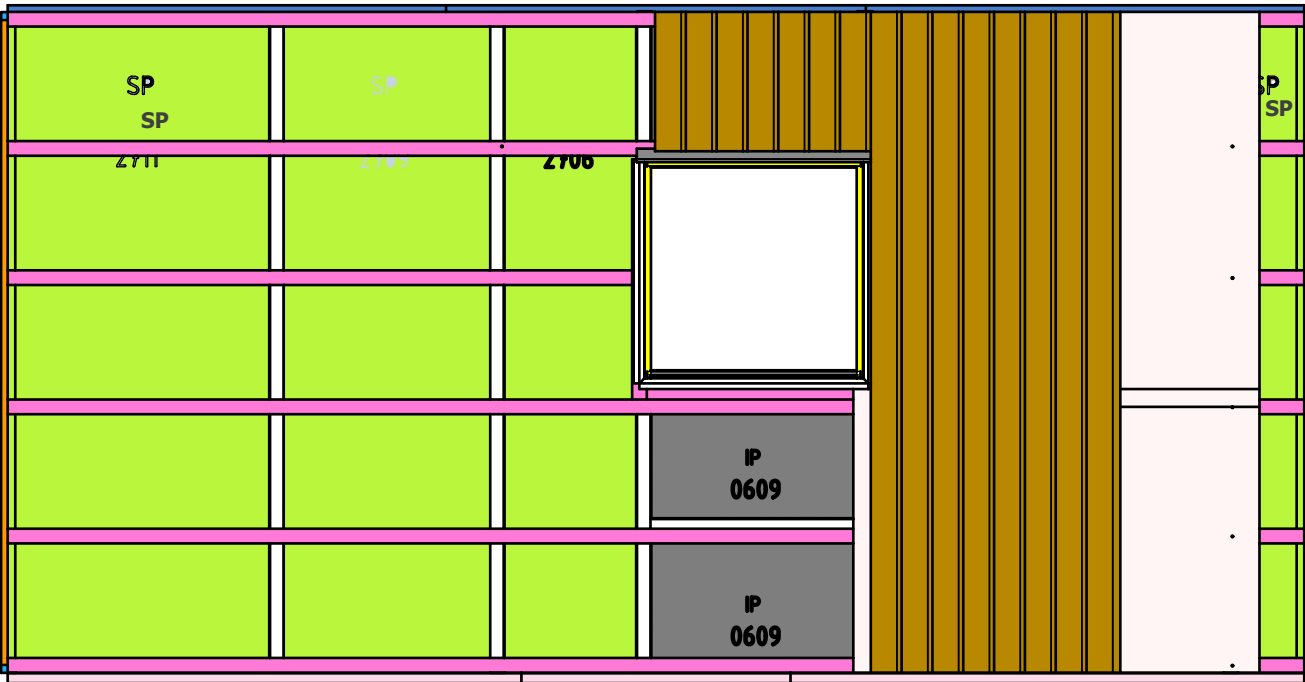


Image 01: Typical Finished External Wall Showing Layered Materials

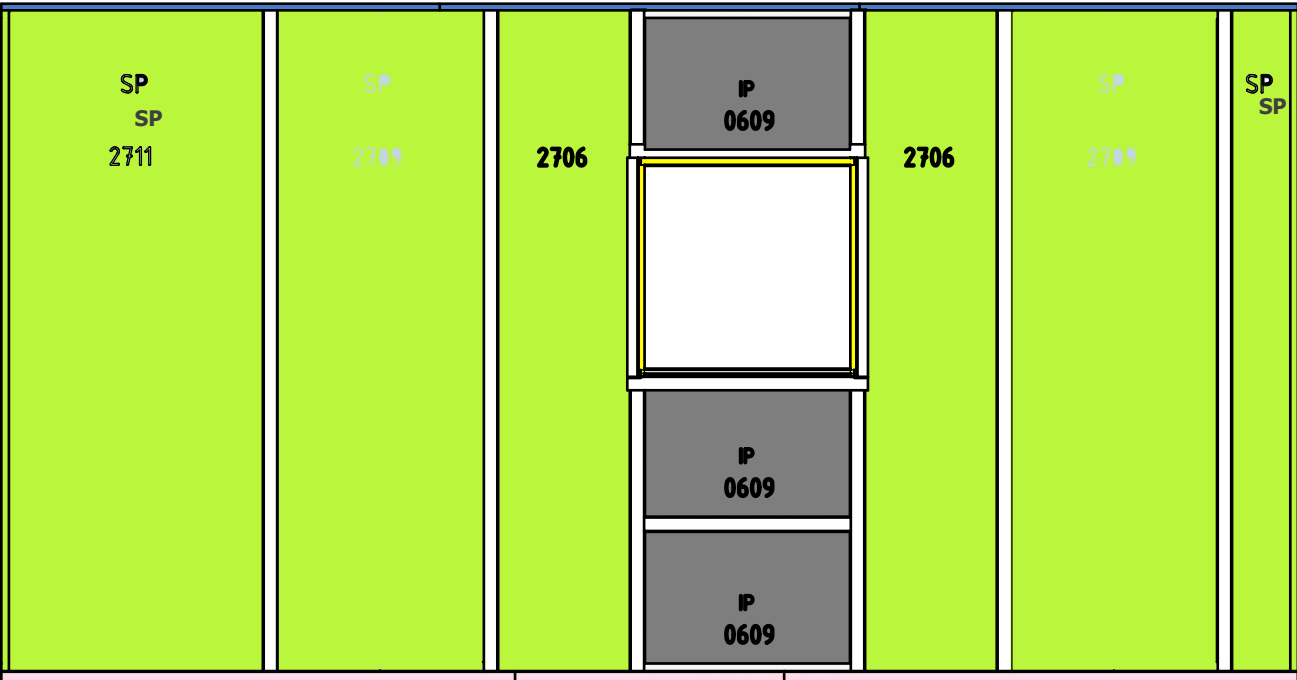


**Important Note:** This installation guide is to assist in the fitting of vertical cladding to the external walls of the Panelok system. It provides examples of fixing solutions only, and all additional cladding should be installed and fixed as per manufacturers fixing details.

Vertical Cladding Installation

Complete applicable steps on [Application Page](#) and window installation prior to vertical cladding installation

Image 02: Wall Ready for Cladding Materials



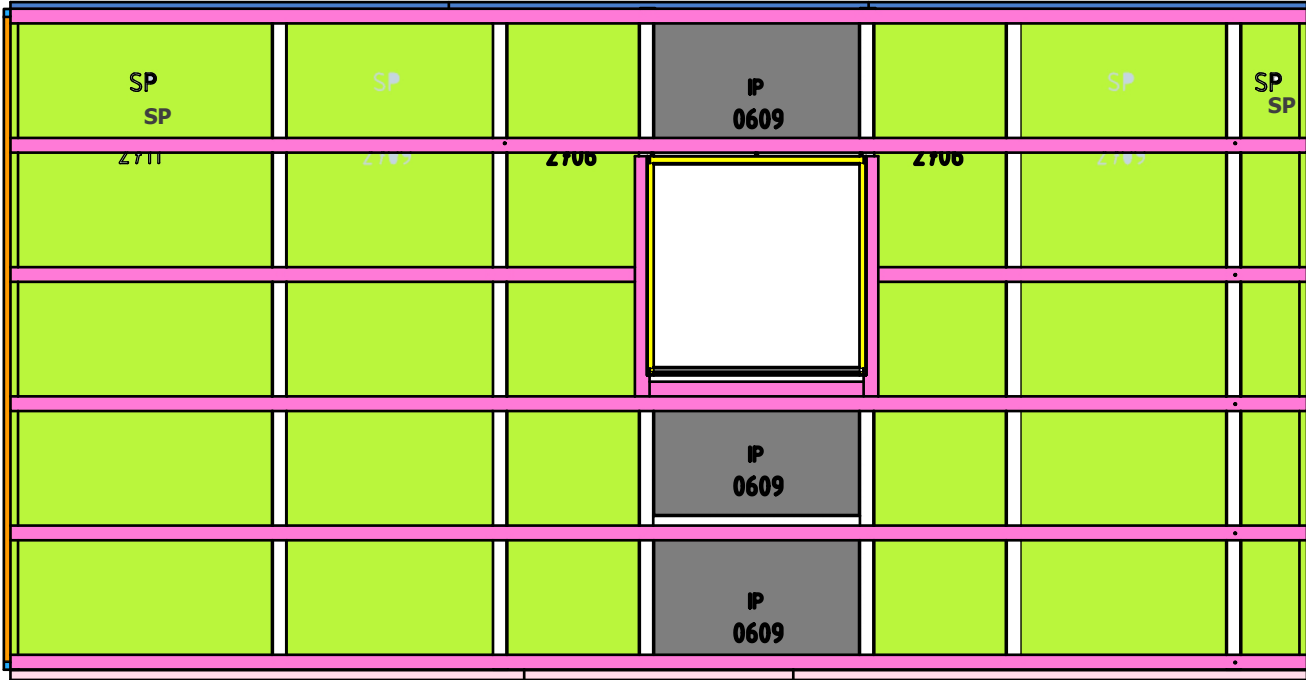
**Important Note:** Ensure all application steps (Penetrating Sealer, Ultra-Flex) have been followed prior to exterior cladding installation. Confirm all window installation is complete pas per the Weatherproofing and Window Installation Guide.

Fixing Timber Battens

Step One

- Apply SikaBond® 145 Super Grip to back of timber battens prior to fixing.
- Screw fix timber (h3 treated or equivalent for external use) horizontal battens at all wall panel joints, through to the Standard Adapter using CSK wing Ribbed 10-16 x 45mm c3.
- Maximum spacing of timber battens is typical 600mm - vertically - maximum screw fix spacing is 1100mm. **NOTE:** Always follow external supplier instruction guide

Image 03: Pink members indicate battens - note battens around window.



**Important Note:** Maximum spacing of horizontal timber battens is typical 600mm or as per the cladding manufactures specification.

Breathable Sisalation

Step Two

- Once all timber battens are fixed to the wall and perimeter of the window, fix flashings to the window perimeter as per cladding manufactures specification.

Step Three

- Prior to installing the vertical cladding, wrap the wall with breathable sisalation as per the manufactures specification.



|   |  |   |  |  |   |  |                   |               |                        |                            |
|---|--|---|--|--|---|--|-------------------|---------------|------------------------|----------------------------|
| <b>Signed by:</b><br><br><b>Date:</b><br><br> |  |   <p>PANELOK BUILDING SYSTEM<br/>PTY LTD</p> <p>13 THOMAS HANLON COURT,<br/>YATALA QLD 4207</p> <p>PH: 07 3917 7233<br/>E : drafting@panelok.com.au<br/>ABN: 26 156 311 625</p> | <b>DOCUMENT:</b><br>PANELOK INSTALLATION GUIDE |  | <b>PAGE NAME:</b><br>TIMBER BATTEN FIXING |  | <b>SCALE:</b>     | <b>DRAWN:</b> | <b>APPROVED:</b><br>GI | <b>DATE:</b><br>13.12.2024 |
|   |  |   |  |  |   |  | <b>PROJECT #:</b> |               | <b>SHEET #:</b><br>14  | <b>REV:</b><br>01          |

Image 04: Plan View of Wall Assembly with Batten

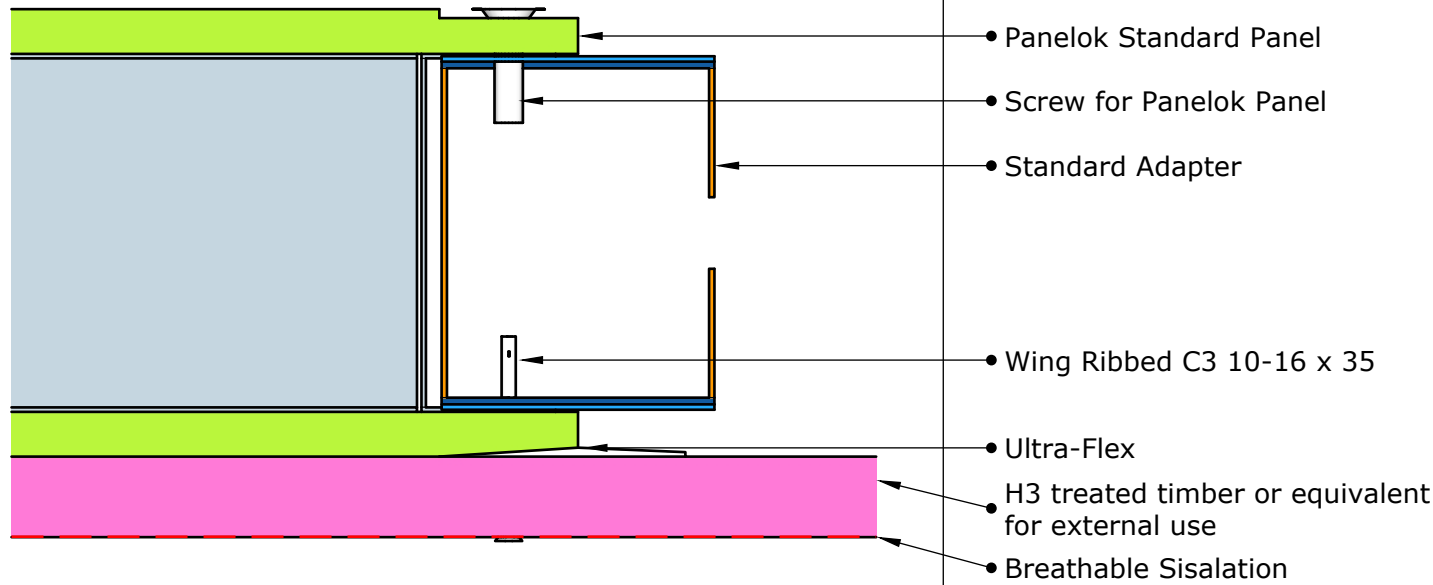


Image 05: Window Flashing Example

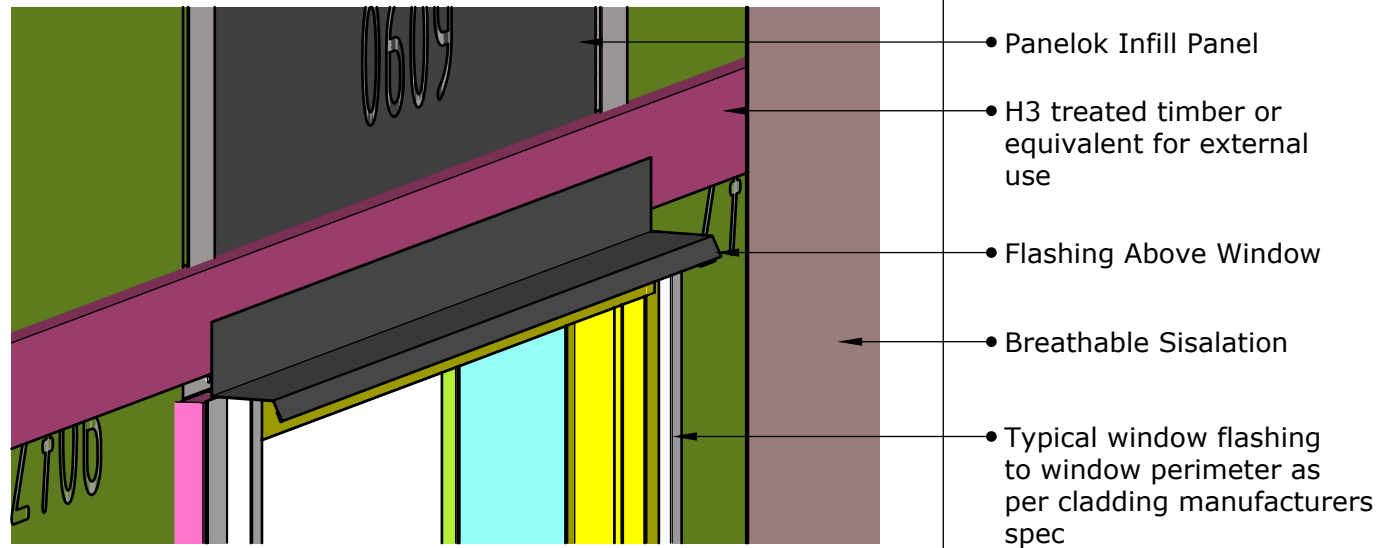
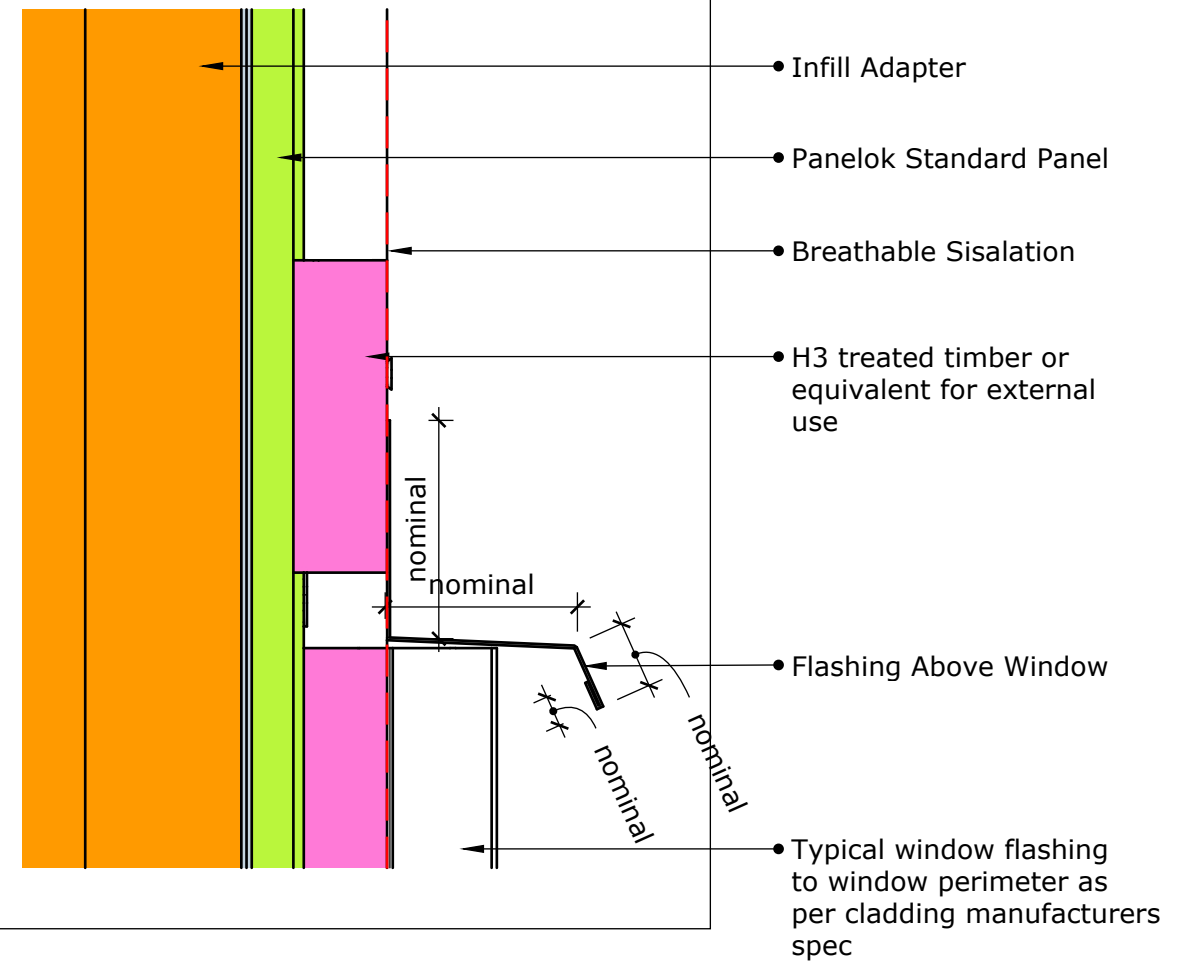


Image 06: Flashing Dimensions & Assembly Profile



Signed by:

Date:



PANELOK BUILDING SYSTEM  
PTY LTD

13 THOMAS HANLON COURT,  
YATALA QLD 4207

PH: 07 3917 7233  
E : drafting@panelok.com.au  
ABN: 26 156 311 625

DOCUMENT:  
PANELOK INSTALLATION GUIDE

PAGE NAME:  
VERTICAL BATTEN INSTALLATION DETAIL

SCALE: DRAWN: APPROVED: DATE:  
GI 13.12.2024

PROJECT #: SHEET #: REV:  
15 01

Image 07: Example Wall with Attached Cladding

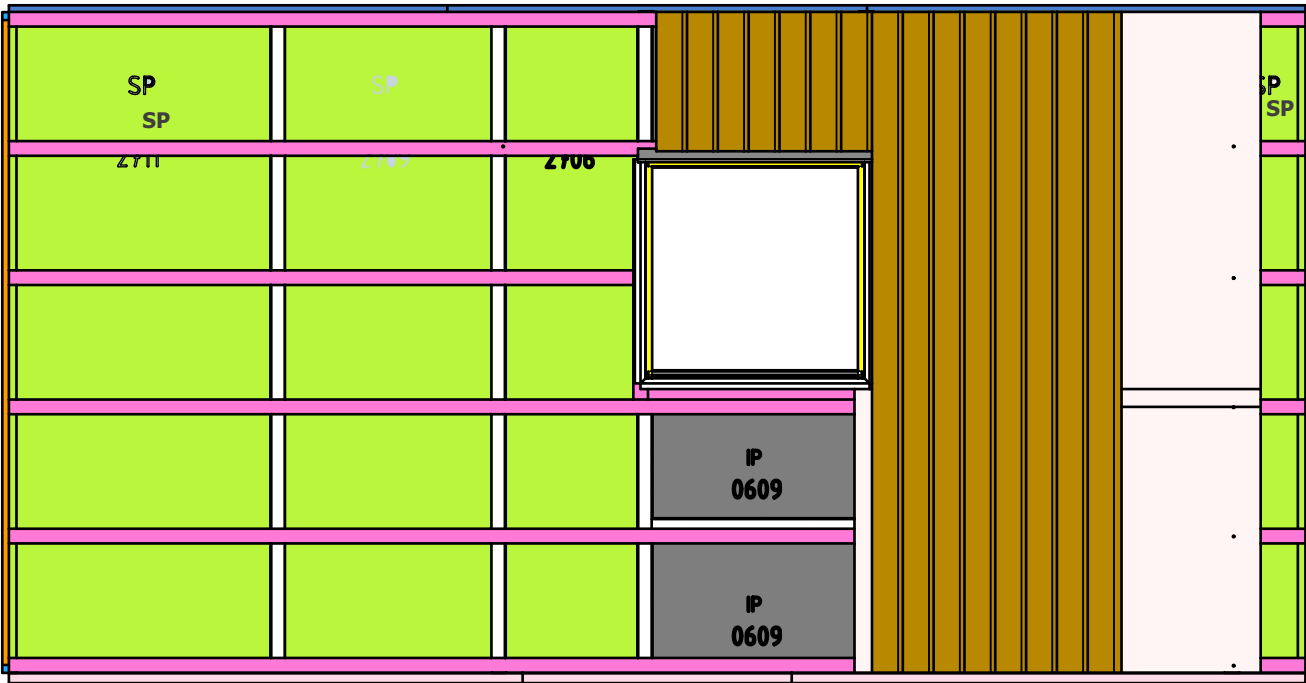


Image 09: - Nail depth with Cladding to Panelok Standard Panel

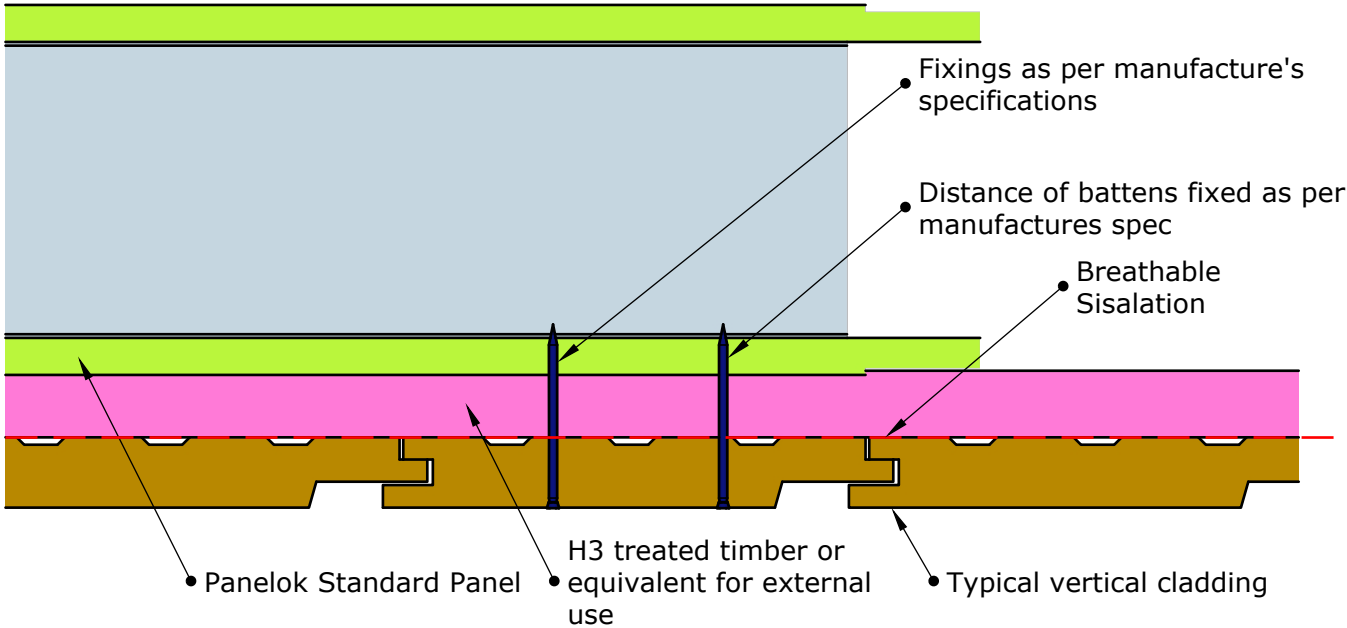
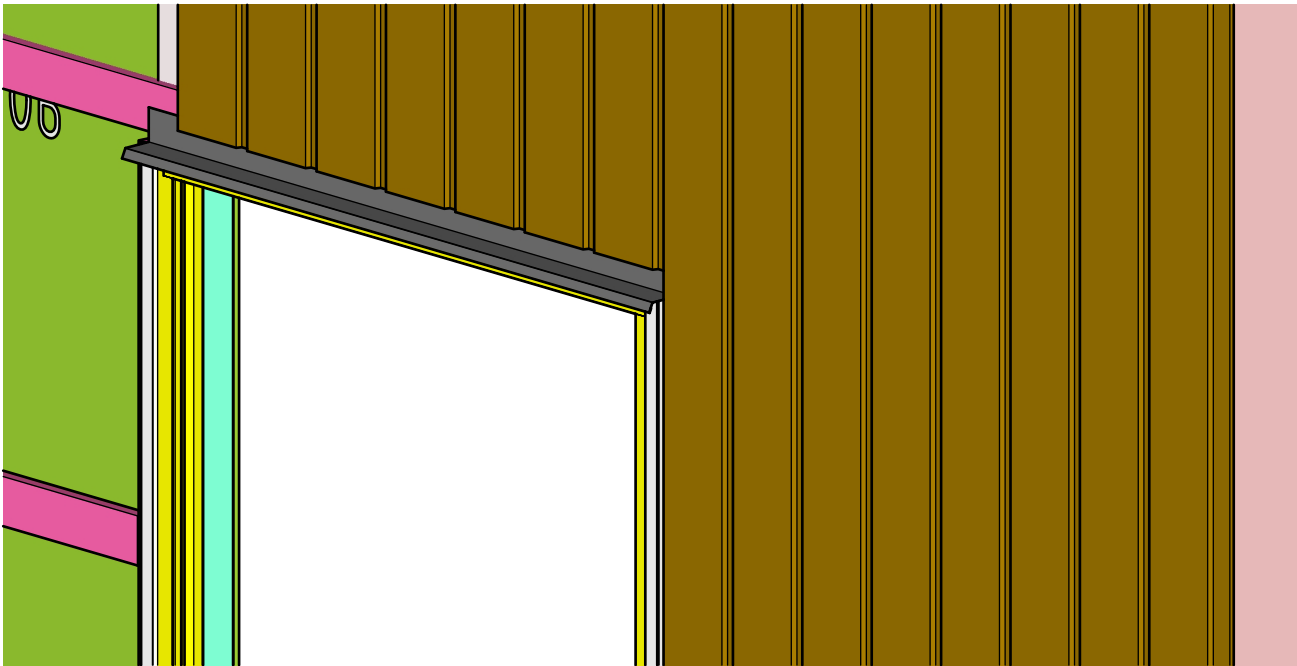


Image 08: Cladding Overlaps Window Flashing



Signed by:

Date:



PANELOK BUILDING SYSTEM  
PTY LTD

13 THOMAS HANLON COURT,  
YATALA QLD 4207

PH: 07 3917 7233  
E : drafting@panelok.com.au  
ABN: 26 156 311 625

DOCUMENT:  
PANELOK INSTALLATION GUIDE

PAGE NAME:  
VERTICAL BATTEN INSTALLATION DETAIL

SCALE: DRAWN: APPROVED: DATE:  
GI 13.12.2024

PROJECT #: SHEET #: REV:  
16 01

The diagram shows a building facade with a central window. The facade is composed of several vertical sections: a light green section on the far left, a pink section, a large brown section with horizontal lines, a white section, and a light green section on the far right. The central window is white with a yellow border and is set within the brown section. The text 'SP' and '271' are visible in the light green sections on the left, and 'SP' is visible in the light green section on the right.

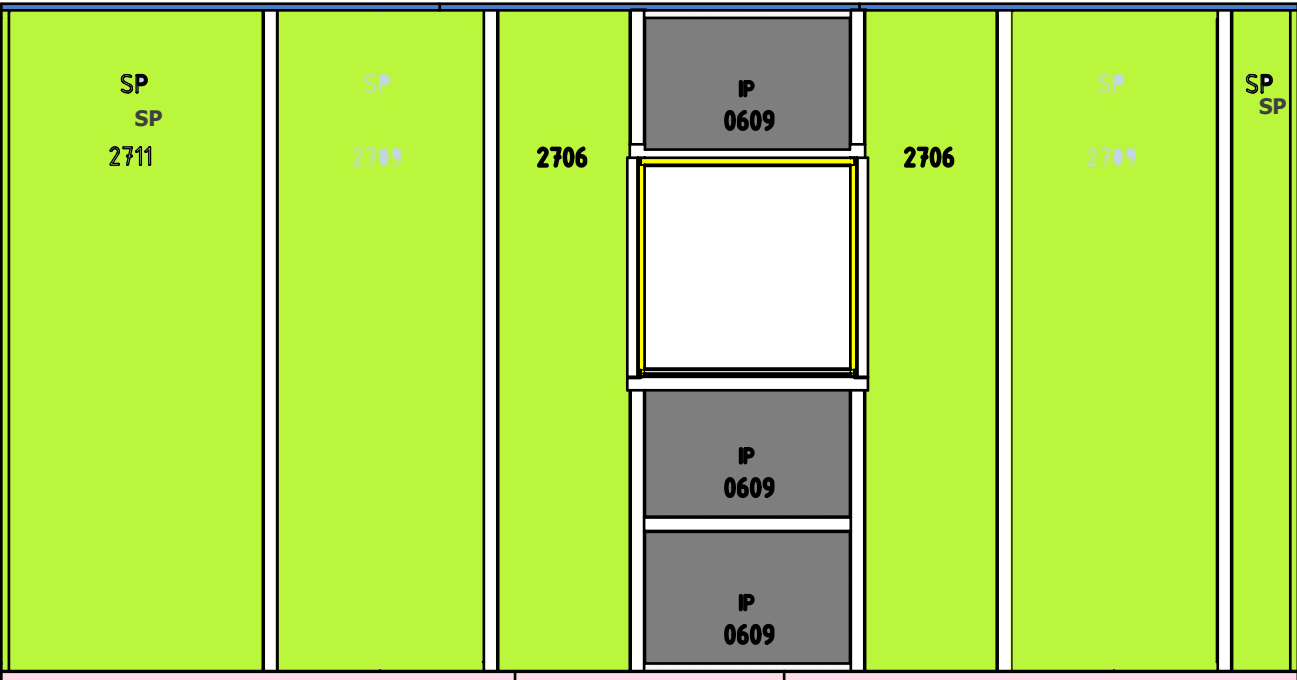
**Horizontal Cladding Installation**

**Complete applicable steps on [Application Page](#) prior to horizontal cladding installation**

The logo for LRM products, featuring the letters 'LRM' in white inside three overlapping blue circles, with the word 'products' in a blue script font below it.

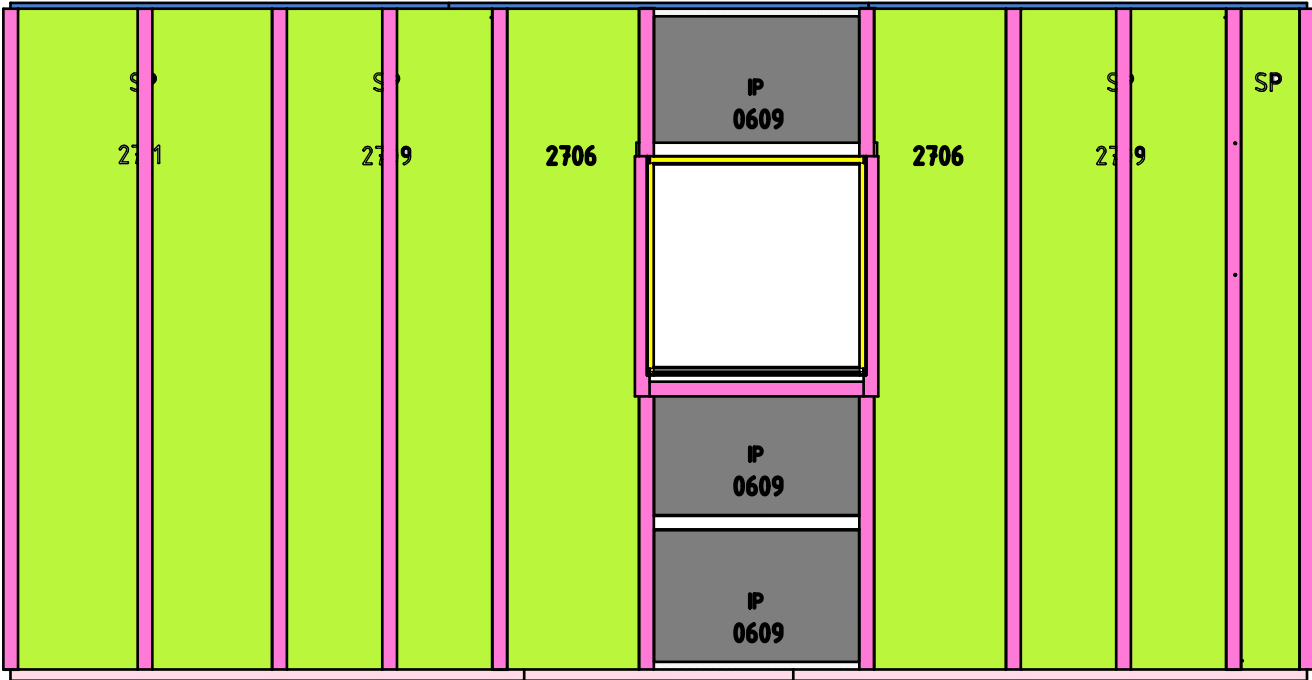
PROJECT #: SHEET #: REV:  
17 01

Image 02: Wall Ready for Cladding Materials



**Important Note:** Ensure all application steps (Penetrating Sealer, Ultra-Flex) have been followed prior to exterior cladding installation. Confirm all window installation is complete pas per the Weatherproofing and Window Installation Guide.

Image 03: Pink members indicate battens - note battens around window.



**Important Note:** Maximum spacing of vertical timber battens is typical 600mm or as per the cladding manufactures specification.

Fixing Timber Battens

Step One

- Apply SikaBond® 145 Super Grip to back of timber battens prior to fixing.
- Screw fix timber (h3 treated or equivalent for external use) vertical battens at all wall panel joints, through to the Standard Adapter using CSK wing Ribbed 10-16 x 45mm c3.
- Maximum spacing of timber battens is typical 600mm - vertically - maximum screw fix spacing is 1100mm

Breathable Sisalation

Step Two

- Once all timber battens are fixed to the wall and perimeter of the window, fix flashings to the window perimeter as per cladding manufactures specification.

Step Three

- Prior to installing the horizontal cladding, wrap the wall with breathable sisalation as per the manufactures specification.



|   |  |   |  |   |                   |                       |                        |                            |
|---|--|---|--|---|-------------------|-----------------------|------------------------|----------------------------|
| <b>Signed by:</b><br><br><b>Date:</b><br><br> |  |   <p>PANELOK BUILDING SYSTEM<br/>PTY LTD</p> <p>13 THOMAS HANLON COURT,<br/>YATALA QLD 4207</p> <p>PH: 07 3917 7233<br/>E : drafting@panelok.com.au<br/>ABN: 26 156 311 625</p> | <b>DOCUMENT:</b><br>PANELOK INSTALLATION GUIDE | <b>PAGE NAME:</b><br>TIMBER BATTEN FIXING | <b>SCALE:</b>     | <b>DRAWN:</b>         | <b>APPROVED:</b><br>GI | <b>DATE:</b><br>13.12.2024 |
|   |  |   |  |   | <b>PROJECT #:</b> | <b>SHEET #:</b><br>18 | <b>REV:</b><br>01      |                            |

Image 04: Plan View of Wall Assembly with Batten

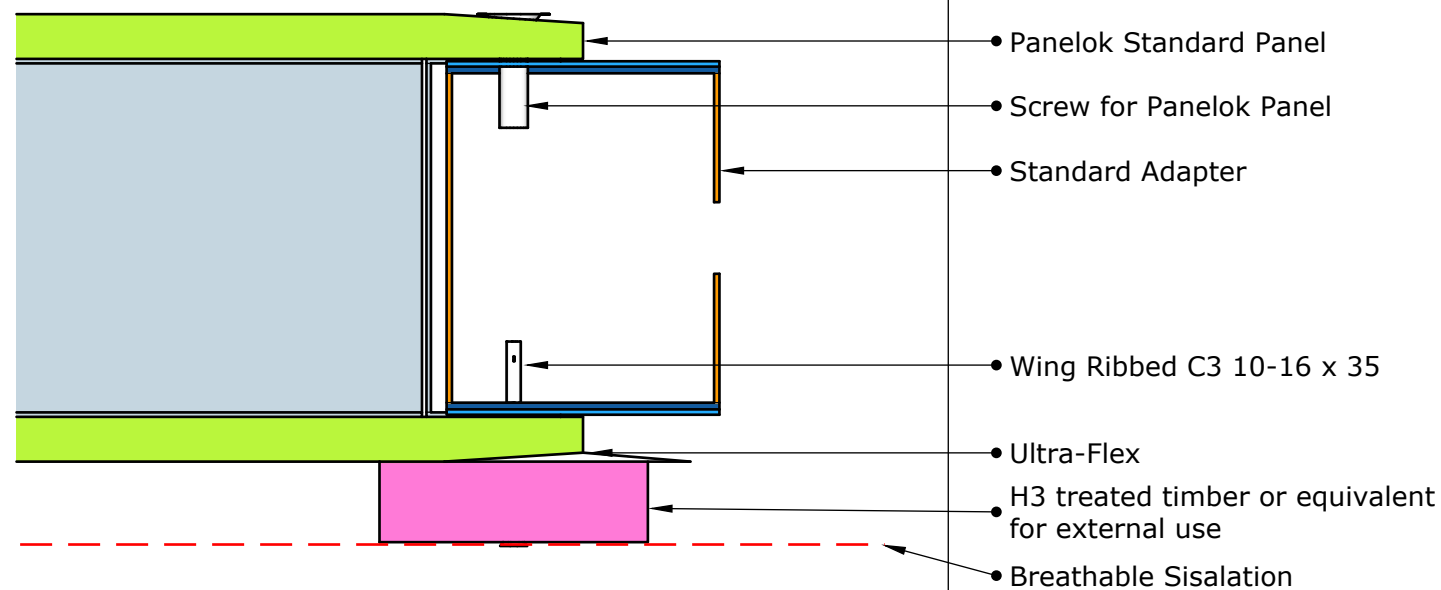


Image 05:

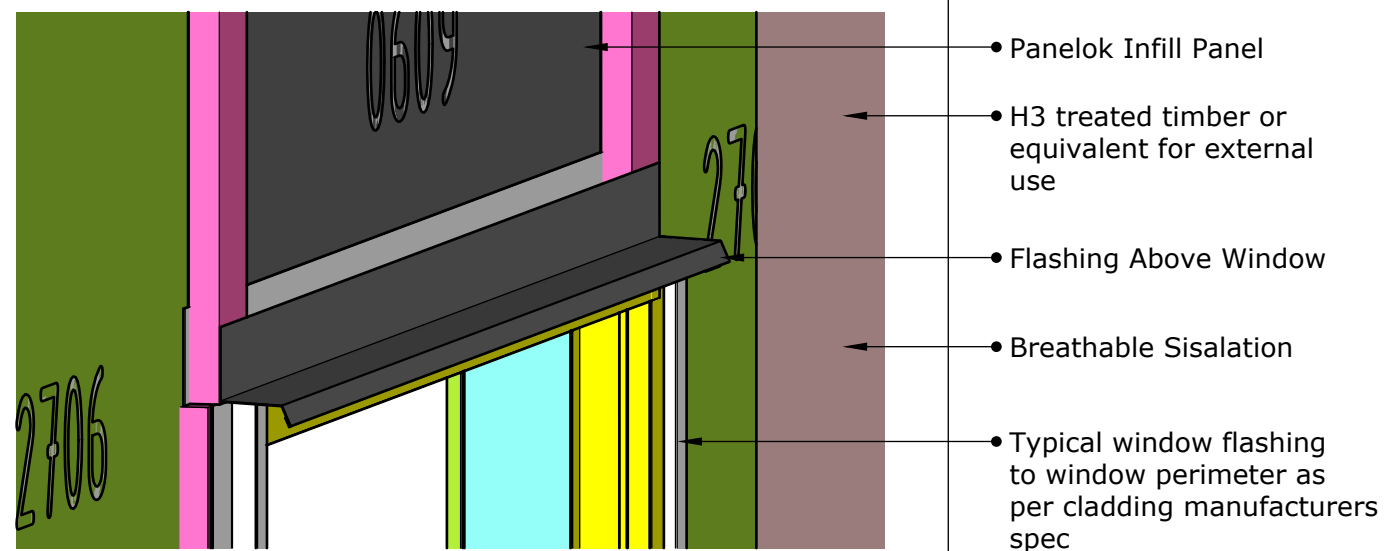
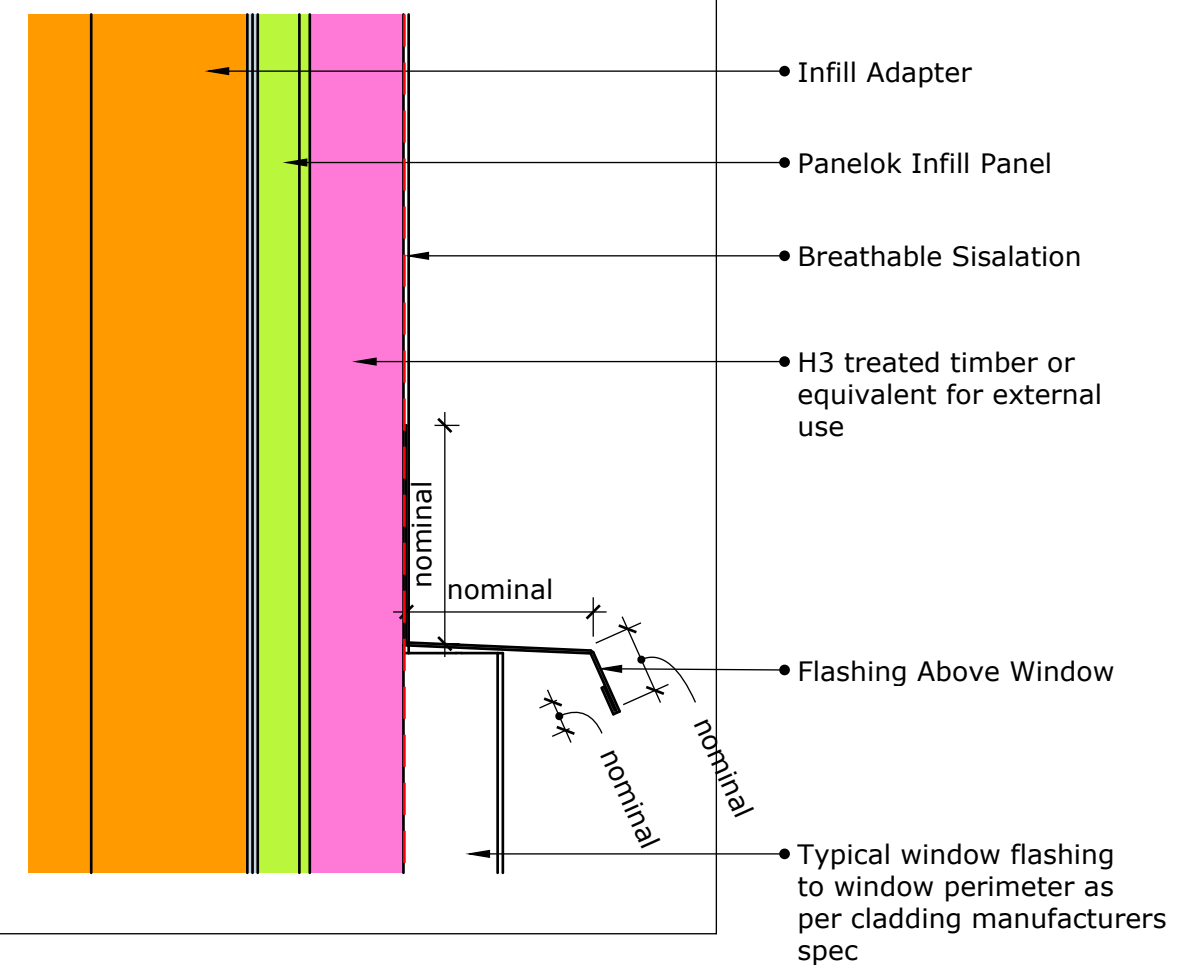


Image 06: Flashing Dimensions & Assembly



Signed by:

Date:



PANELOK BUILDING SYSTEM  
PTY LTD

13 THOMAS HANLON COURT,  
YATALA QLD 4207

PH: 07 3917 7233  
E : drafting@panelok.com.au  
ABN: 26 156 311 625

DOCUMENT:  
PANELOK INSTALLATION GUIDE

PAGE NAME:  
HORIZONTAL BATTEN INSTALLATION DET/

SCALE: DRAWN: APPROVED: DATE:  
GI 13.12.2024

PROJECT #: SHEET #: REV:  
19 01

Image 07: Example Wall with Attached Cladding



Image 09: - Nail depth with Cladding to Panelok Standard Panel

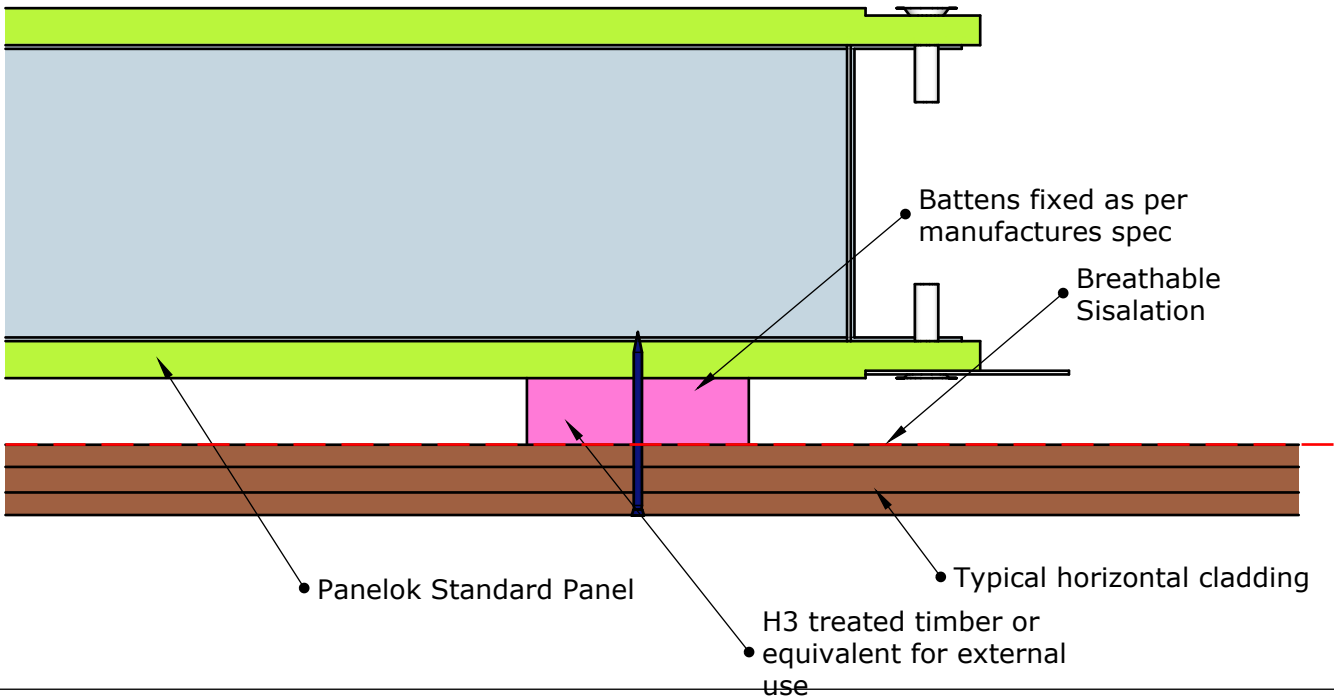


Image 08: Cladding Overlaps Window Flashing

